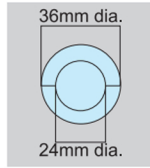


# POLE

TRIPOD 1  
PRISM 2  
POLE 3  
STAFF 4  
GPS 5  
SURVEYING INSTRUMENT 6  
SURVEYING ACCESSORY 7  
MEASURING TOOL 8  
TESTING SECURITY 9

## PRISM POLE 4.5M PP-450



### FEATURES

- Longest type of prism pole with ring lock system
- Suitable for forest surveying
- Built-in circular level 40' / 2mm
- 5/8 inch screw head on the top of pole
- Stainless made shoe is changeable

### SPECIFICATIONS

- Full extended : 4,650mm
- Full closed : 1,500mm
- Weight : 1,850g
- Graduation : Metric
- Pitch of color : 1 ft interval by red & white (lower pole)



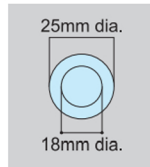
5/8 inch thread

### ACCESSORIES

Circular level (40' / 2mm), Case

CODE NO.	MODEL	REMARKS
218305	PP-450	4,650mm x 4 sections, 5/8inch thread
218306	PP-450	1,500mm x 1 section, 5/8inch thread

## PRISM POLE 2M QUICK LEVER TYPE PP-200A



### FEATURES

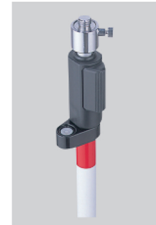
- Fixable on your favorite position
- Detachable 5/8 inch adaptor
- Built-in circular level makes more accurate leveling
- The shoe is fixed to the pole (unexchangeable)

### SPECIFICATIONS

- Dimensions : 1,200 ~ 2,050mm
- Weight : 840g
- Graduation : Metric graduation
- Circular level : Built-in (20'/2mm)

### ACCESSORIES

Case



Quick release

CODE NO.	MODEL	REMARKS
212284	PP-200A	Prism pole quick release type

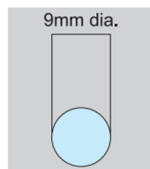
## DM PIN POLE COLORFAST TYPE MPP-18



MPP-18



MPP-C



### FEATURES

- Non colorfast pole
- Red parts are made of resin to maintain the color
- High durability by the use of toughened stainless
- High quality by Japan made
- Easy to see the color at 5cm intervals

### SPECIFICATIONS

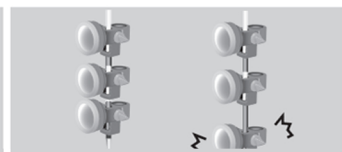
- Full extended : 1,800mm
- Section : 600mm x 3 sections
- Diameter : 9mm dia.



Restore the color of pole by the use of 1mm thick resin



Conventional product



CODE NO.	MODEL	REMARKS
219522	MPP-18	600mm x 3 stainless / resin
219714	MPP-C	Resin case
101919	DMP-50	Shoe with ring
219524	DMP-M6	Shoe with ring

